

PRELIMINARY



The Torrey

4 Bedrooms | 3.5 Bathrooms | 2-Car Garage | 3,420 SF



CRAFTSMAN



MODERN FARMHOUSE



TRANSITIONAL

BASE PRICE

HOMESITE NUMBER

HOMESITE PREMIUM

OPTIONS

TOTAL

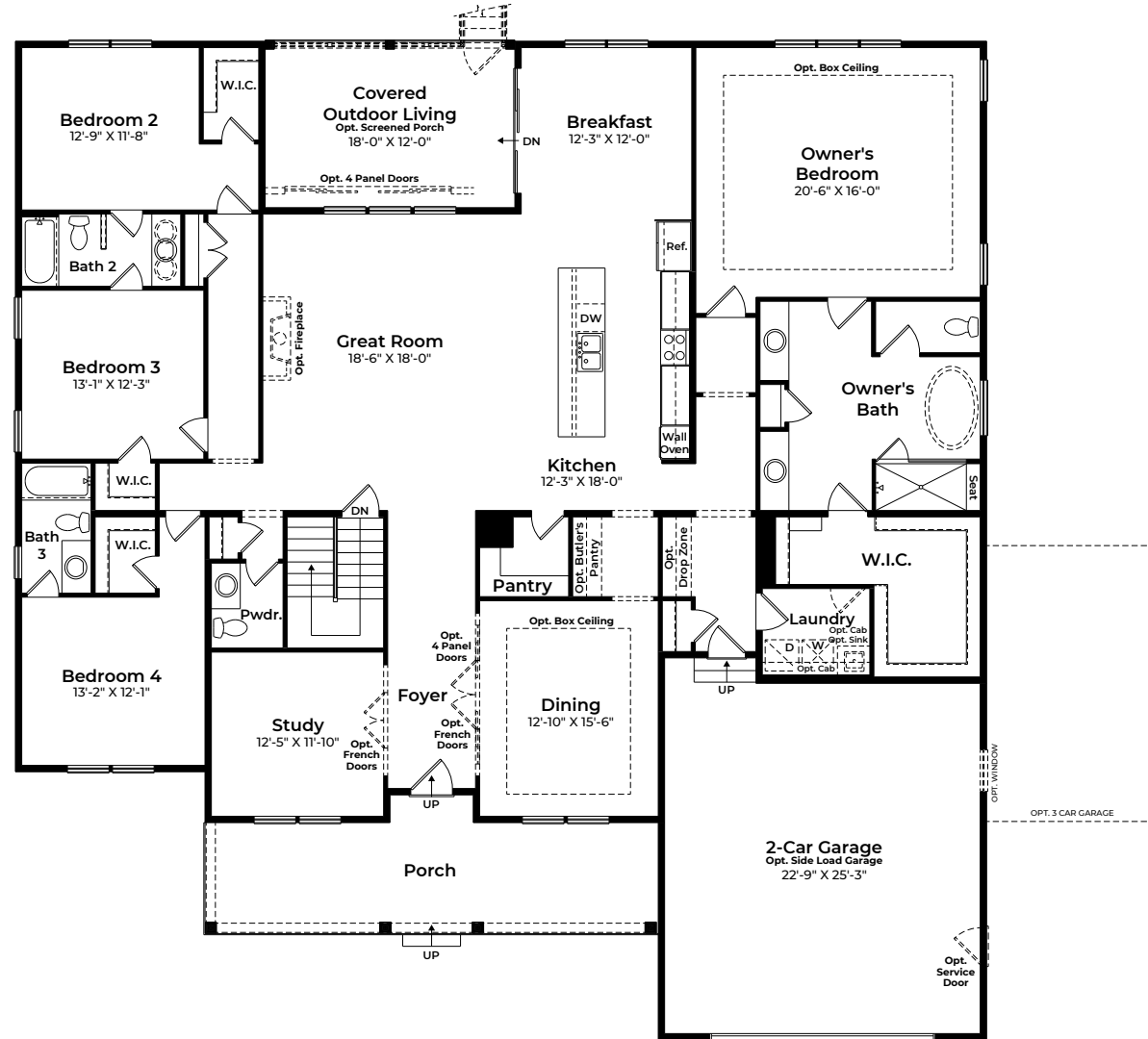
PRELIMINARY

ATLANTIC
BUILDERS

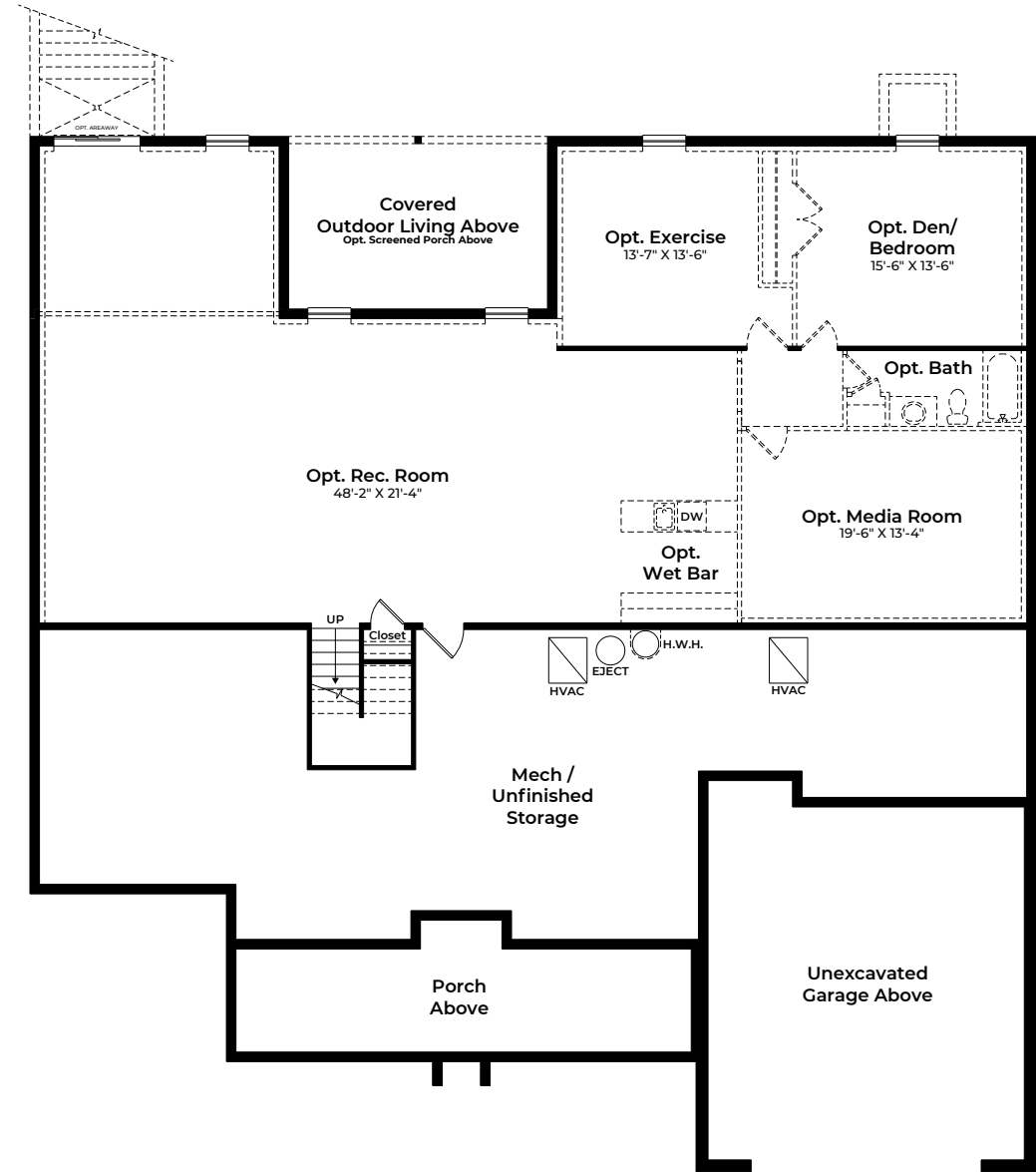
[ATLANTICBUILDERS.COM](https://atlanticbuilders.com) 

*These renderings and floorplans are conceptual only. Actual details may vary. This insert is for illustrative purposes only. Atlantic Builders' continuing research and development program means specifications and plans are subject to change without notice. Standard features vary per community. Please consult Community Sales Manager for details. 2/27/2024

PRELIMINARY



MAIN LEVEL



LOWER LEVEL

PRELIMINARY