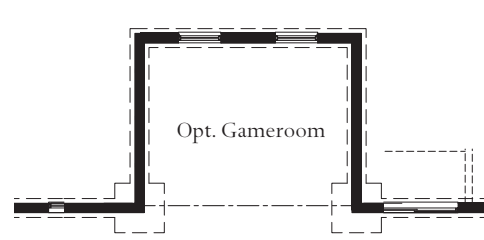
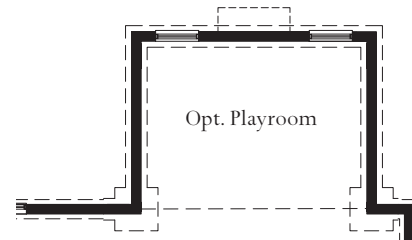


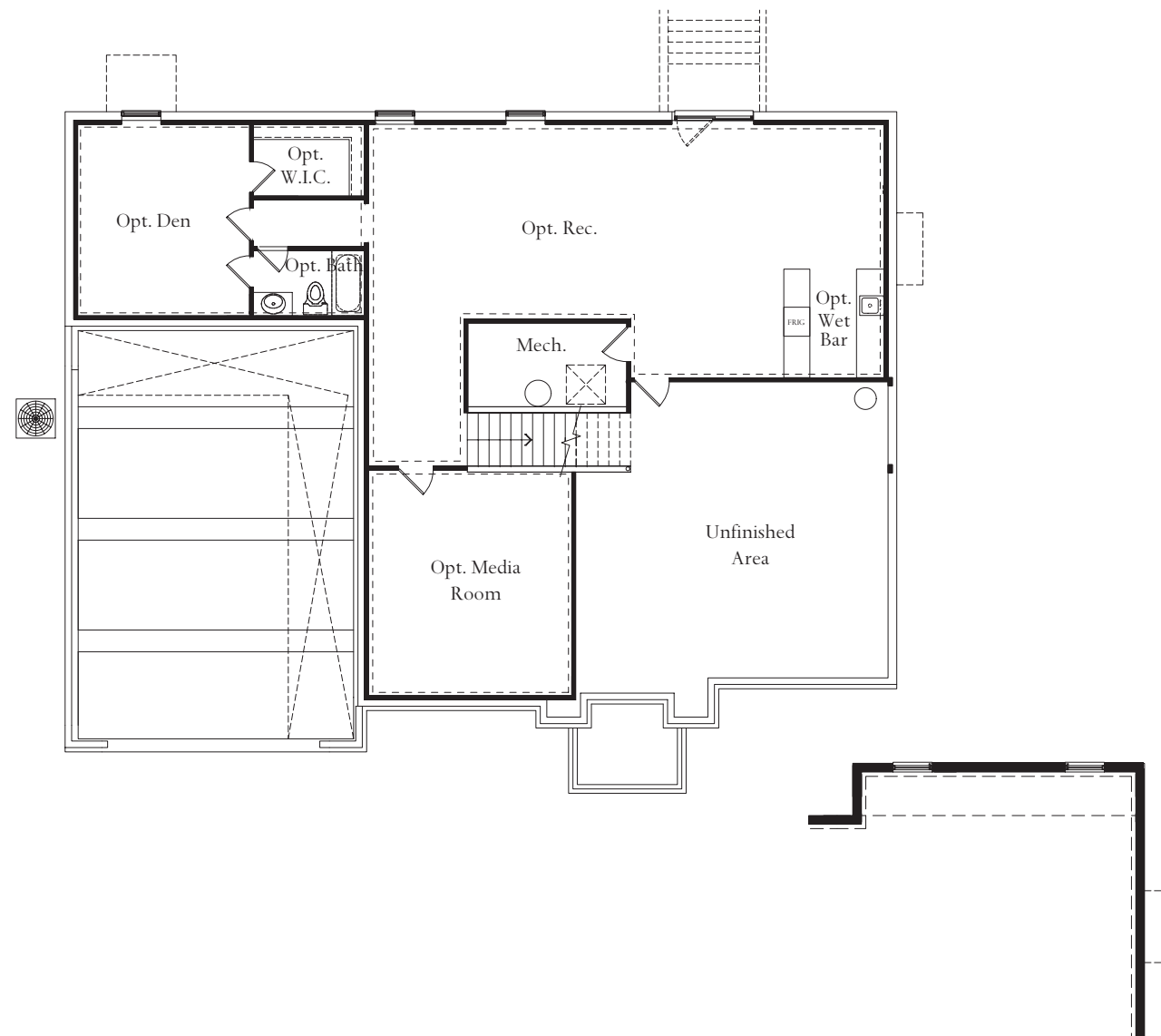
# The Parker



Partial foundation level with opt. morning room



Partial foundation level with opt. sunroom



LOWER LEVEL

Partial foundation level with opt. 4' great room extension



{ Eastern Seaboard }



{ Craftsman }



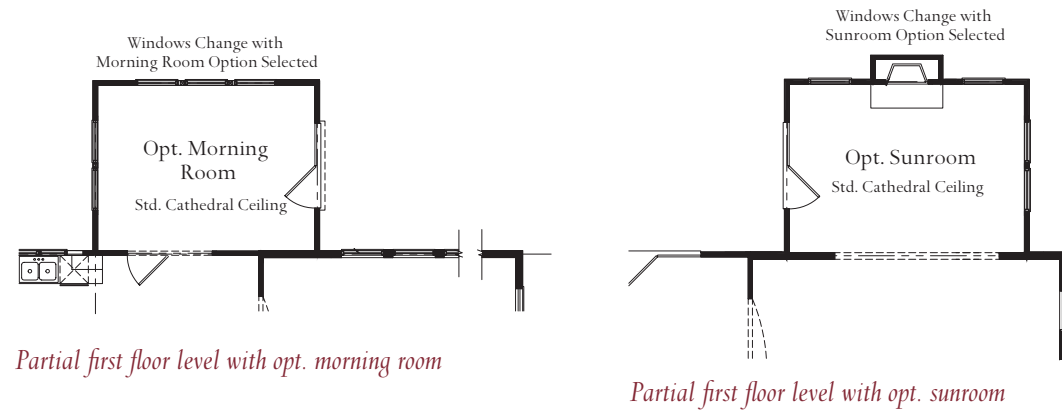
{ Cotswold }

The Parker, one of Atlantic Builders Distinctive Series Homes, offers luxurious living with an eye to detail. With Architectural features on the Exterior and Interior that truly offer a distinctive look, the Parker is available in three styles, Cotswold, Craftsman and Eastern Seaboard. The Executive style Kitchen opens to a casual eating area and Great Room, which is perfect for entertaining or family gatherings. Just off of the family entrance is a Laundry room, Mud room, versatile Craft room, and a Pocket Office, offering a space to organize the family calendar and catch up on correspondence. The main level also features a Dining Room and Study. Upstairs, the Master Suite, featuring a large walk in closet, a seasonal storage area and a luxury bath, is complete with an oversized walk in shower. The second level also features three other bedrooms, one with its own private bath and options for a Laundry room and a Bonus Room. The lower level can be finished to include a Recreation Room, a Media Room, a Wet Bar, a Den and a Full Bath. Starting at over 4100 sq. ft.

**ATLANTIC BUILDERS**  
GIVING YOU MORE

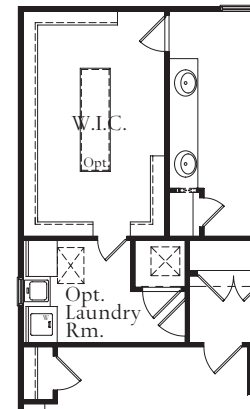


**ATLANTIC BUILDERS**  
GIVING YOU MORE

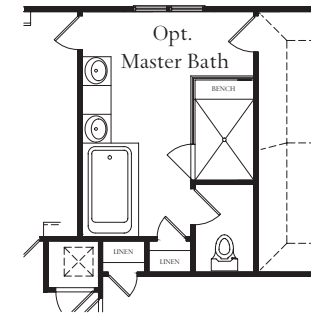


*Partial first floor level with opt. morning room*

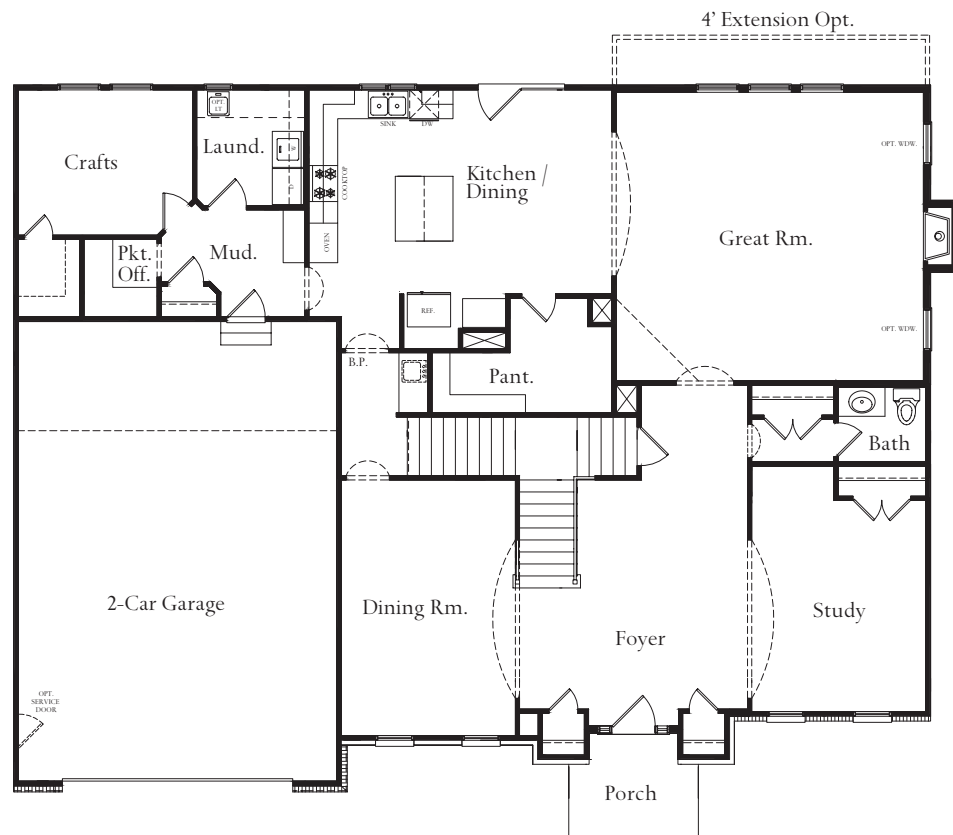
*Partial first floor level with opt. sunroom*



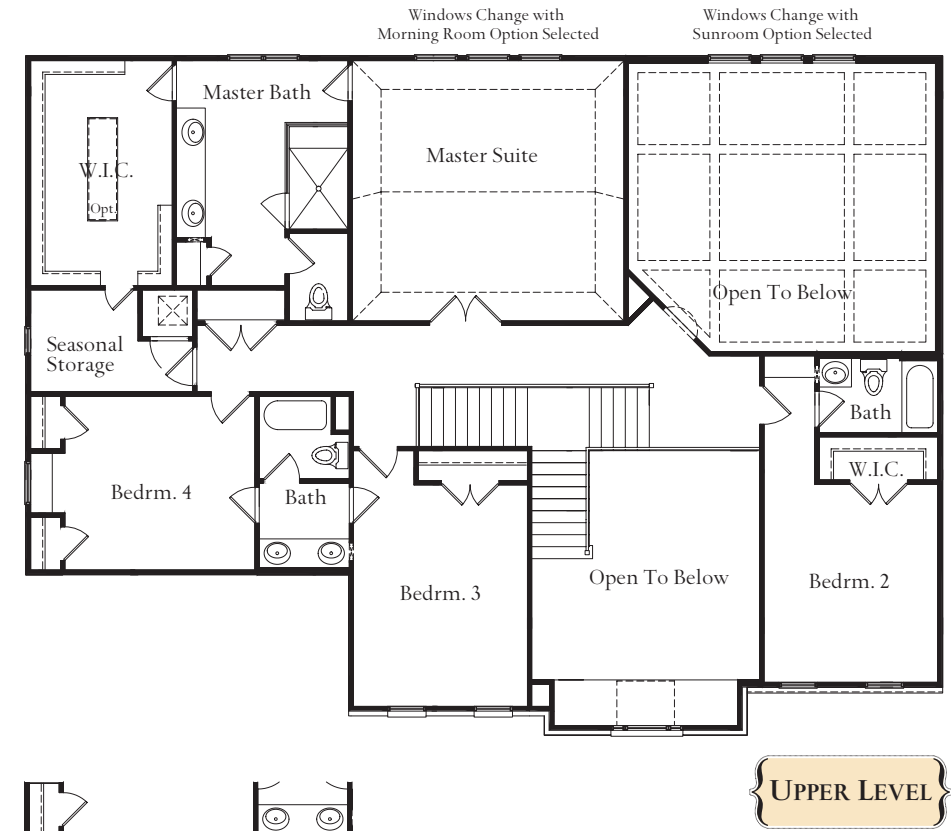
*Partial second floor level with opt. laundry room*



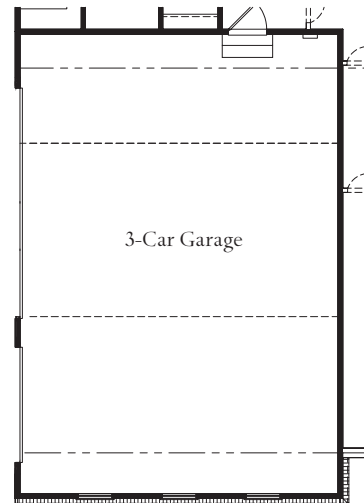
*Partial second floor level with opt. master bath*



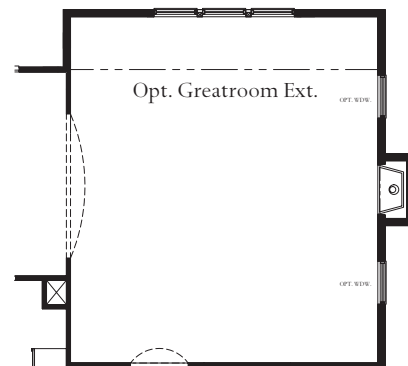
**MAIN LEVEL**



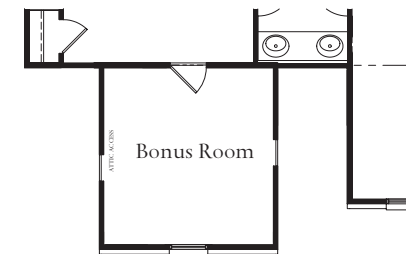
**UPPER LEVEL**



*Opt. 3-car side entry garage*



*Partial first floor level with opt. 4'-0" great room extension*



*Partial second floor level with opt. bonus room*