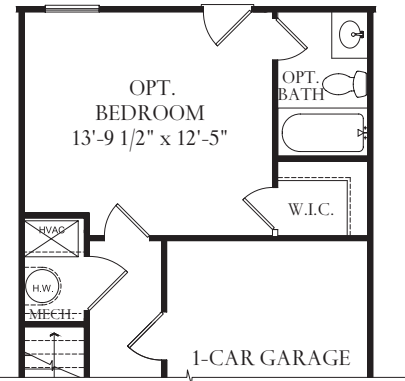
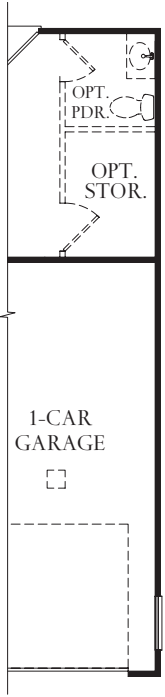
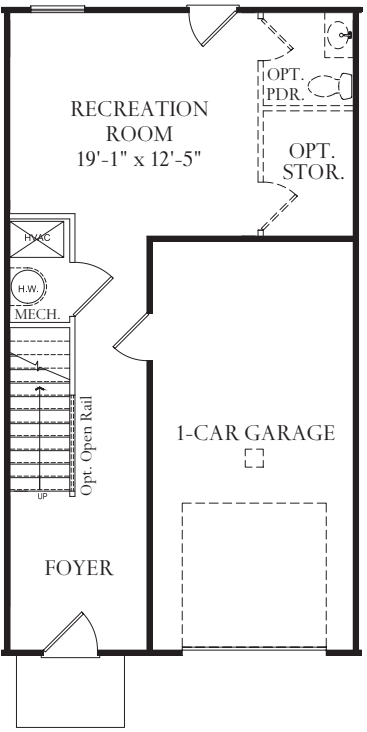


The Devon



Partial First Floor Plan @ Opt. Bedroom



@ End Condition

LOWER LEVEL



The Devon features 3-4 bedrooms, 2.5-3.5 baths, a garage, and an open main level floor plan with expandable living space on the lower level. The plan has room for entertaining as well as space for family living. With two distinct main level plans to choose from, the kitchen can be at the rear of the home with an optional island or in the center of the home with the included island. An Optional Powder Room can be added to either plan. On the Bedroom Level, the Master Bedroom Suite has its own bathroom with dual vanity, step-in shower and oversized walk-in closet. Two additional bedrooms, a hall bath and laundry area are also on the upper level.

ATLANTIC BUILDERS
EXPERIENCE THE DIFFERENCE



ATLANTIC BUILDERS
EXPERIENCE THE DIFFERENCE

