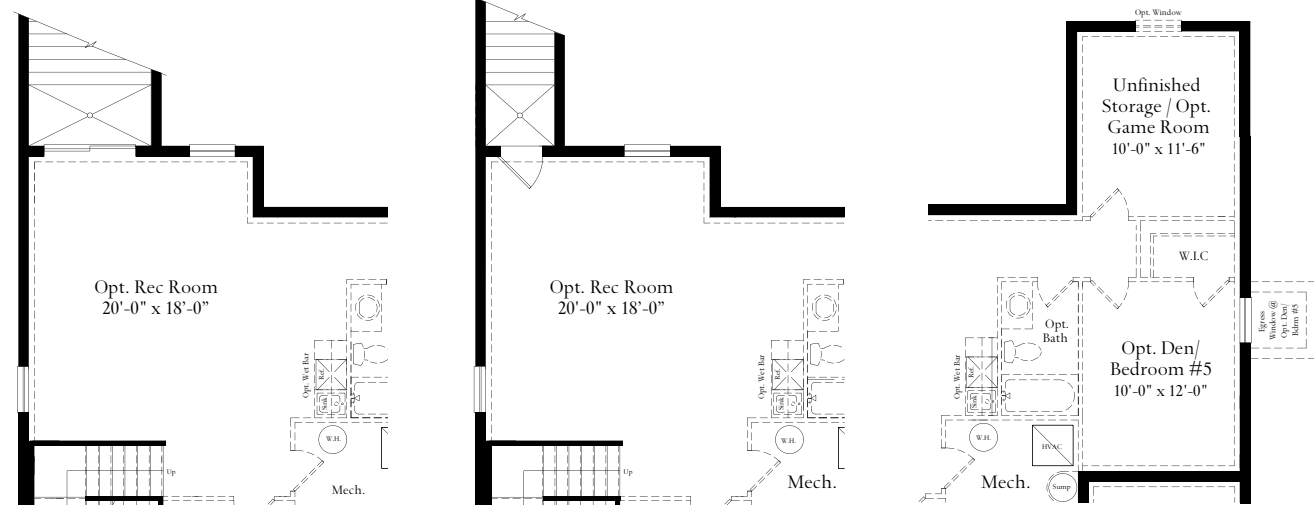


The Eliot



Opt. Partial Basement Floor Plan
@ Opt. 4' Great Room Extension Above
w/ Opt. Double Wide Areaway

Opt. Partial Basement Floor Plan
@ Opt. 4' Great Room Extension Above
w/ Opt. Single Wide Areaway

Opt. Partial Basement Floor Plan
@ Opt. 12' Morning Room Extension Above



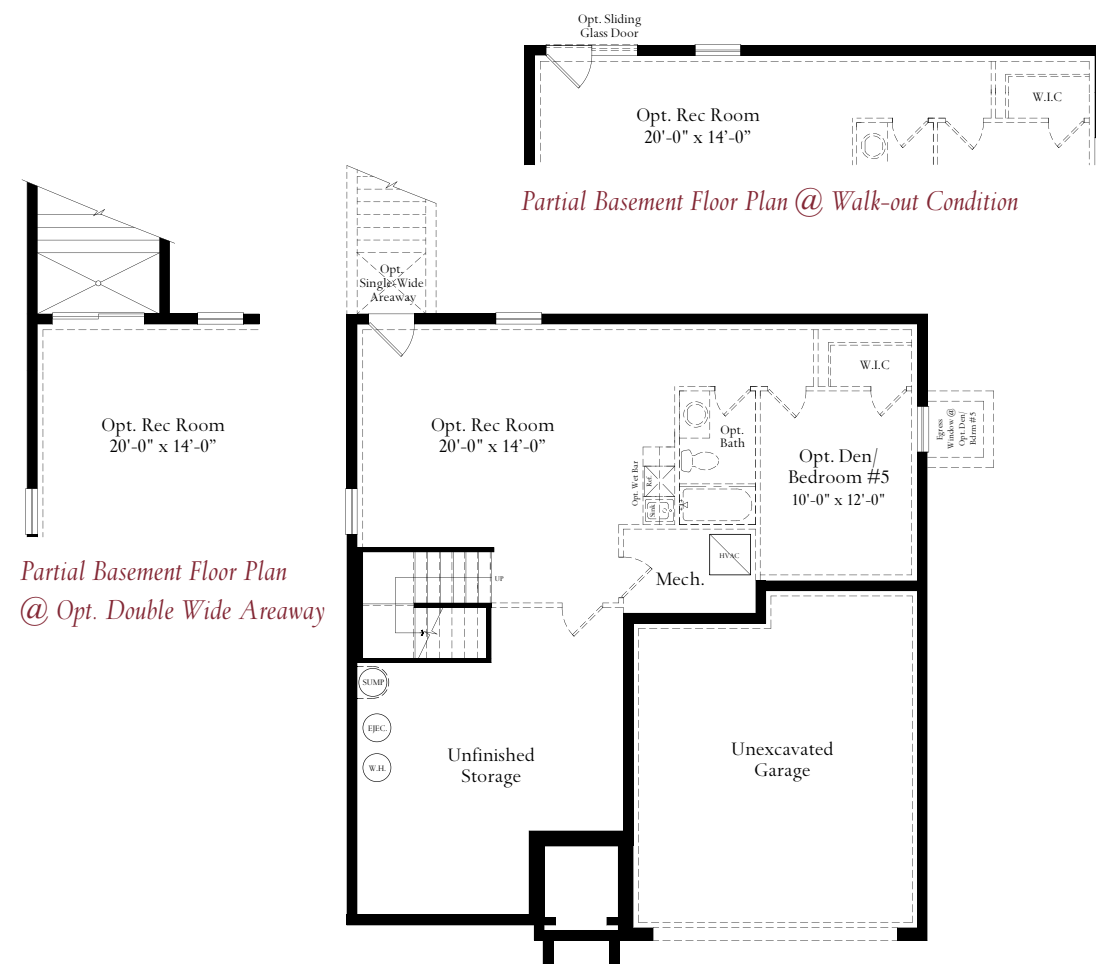
{ Craftsman - Stone to Grade }



{ Eastern Seaboard - Full Porch }



{ Eastern Seaboard - Stone to Grade }



Partial Basement Floor Plan @ Walk-out Condition

Partial Basement Floor Plan
@ Opt. Double Wide Areaway

LOWER LEVEL



{ Federal - Stone to Grade }



{ Federal - Stone Water Table }

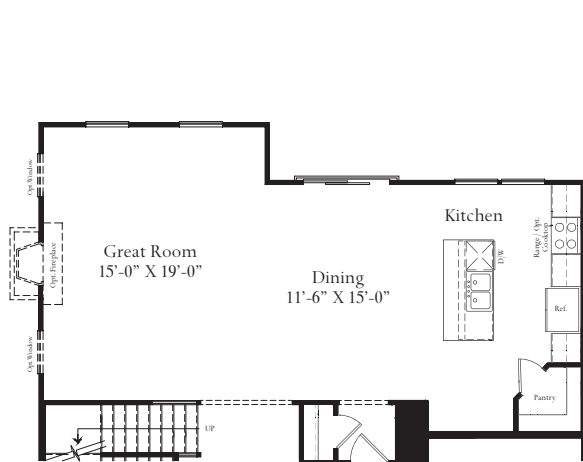
The Eliot is a modern take on a traditional family home. With a Great Room, Family Dining Room and Kitchen open to each other, gathering together is certainly the best part of the day. The Flex Space as you enter from the front door can be used as a study, home office or play space, truly a flexible room for your family. Upstairs, the Owner's Bedroom with luxurious bathroom, including walk in shower is sure to please. An alternate plan with a soaking tub is also offered as an option. Three additional bedrooms, a hall bath and laundry room are also included upstairs. The full basement can be finished with a Rec Room, Full Bath, Den and Media Room. On the Main Level, there are options for a Great Room Extension, Morning Room and Great Room Fireplace. This home starts at 2234 sq. ft.

ATLANTIC BUILDERS
EXPERIENCE THE DIFFERENCE

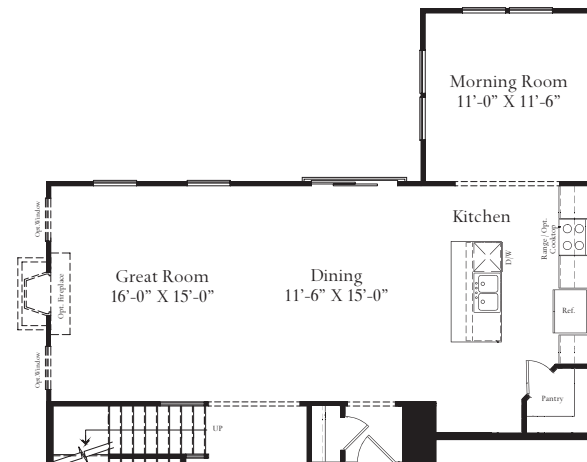


ATLANTIC BUILDERS
EXPERIENCE THE DIFFERENCE

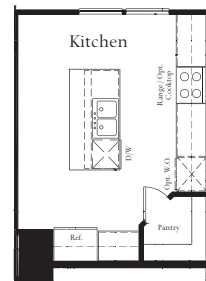
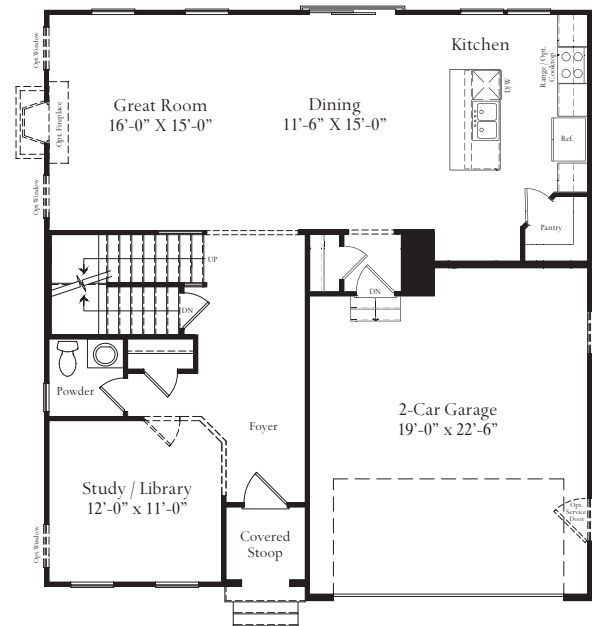
The Eliot



Partial main level with Opt. 4' Great Room Extension

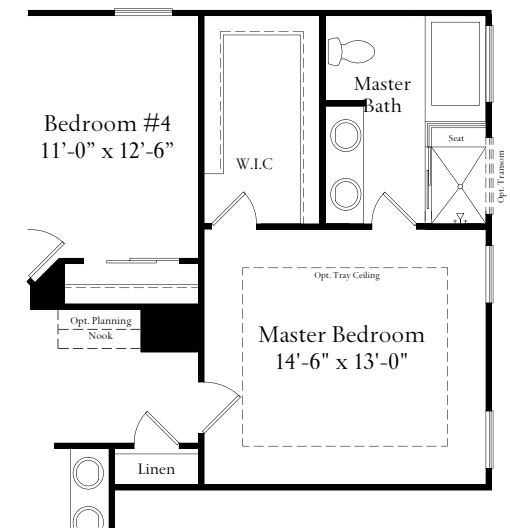
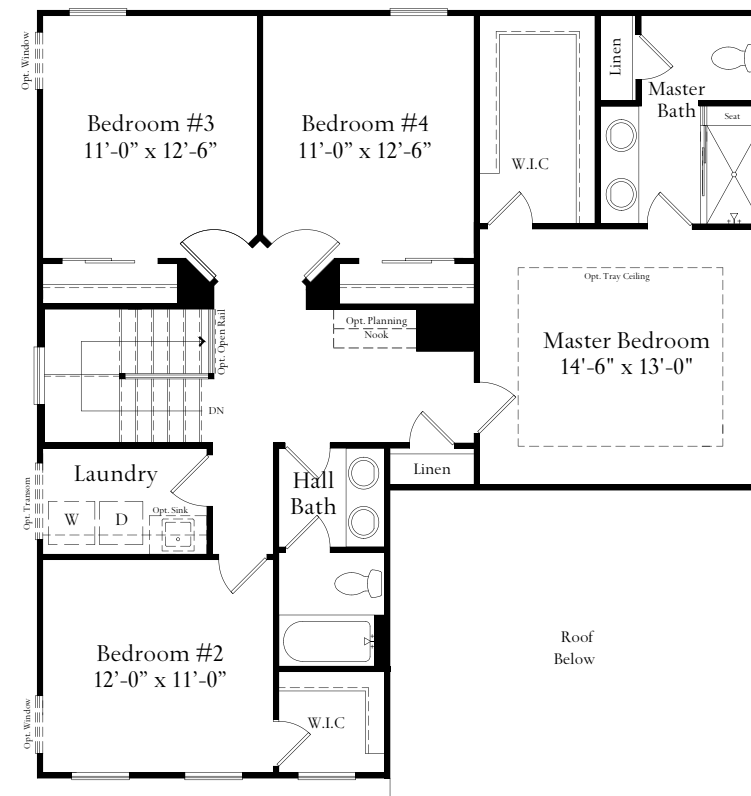


Partial main level with Opt. Morning Room Extension



Partial main level with Opt. Gourmet Kitchen Layout

MAIN LEVEL



Partial upper level with Opt. 5-Piece Master Bath

UPPER LEVEL

These renderings and floorplans are conceptual only. Actual details may vary. This insert is for illustrative purposes only. Atlantic Builders' continuing research and development program means specifications and plans are subject to change without notice. Standard features vary per community. Please consult Community Sales Manager for details.